

**6TH ANNUAL GENERAL MEETING**



**COMMIT TO  
EXCELLENCE**

# TASHIN

Plot 40, Lorong Perusahaan Maju 7, Kawasan Perusahaan 4, 13600 Prai, Penang, Malaysia.

Tashin Steel Sdn Bhd



# TASHIN

No. 1617, Lorong Perusahaan Maju 6, Kawasan Perusahaan 4, 13600 Prai, Penang, Malaysia.

Tashin Hardware Sdn Bhd



## Tashin Group Corporate Structure

# TASHIN

### Principal activities

Manufacturing and selling of steel products

Manufacturing and trading of steel material and general hardware products

**TASHIN**  
TASHIN HOLDINGS BERHAD  
201701028709 (1242878-H)

**100%**

TASHIN STEEL SDN. BHD.  
199801014965 (471094-P)

**100%**

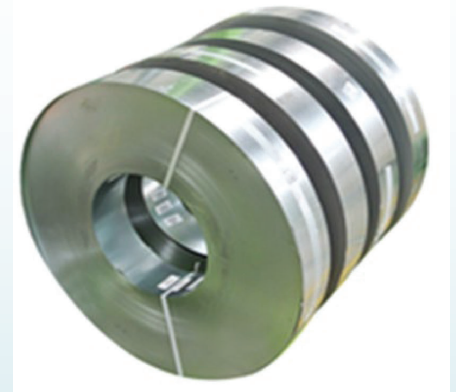
TASHIN HARDWARE SDN. BHD.  
200401004046 (642549-V)



# OUR PRODUCT

# TASHIN

## Steel Processing



Slit Coils



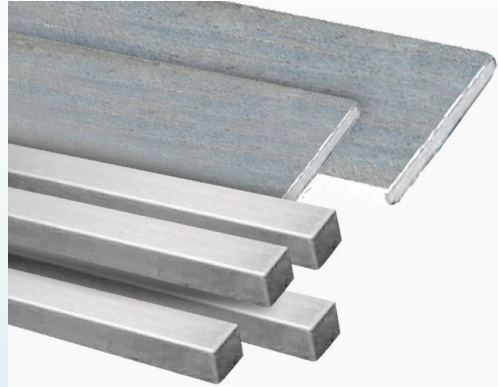
Steel sheets

## OUR PRODUCT

# TASHIN



Steel Pipes



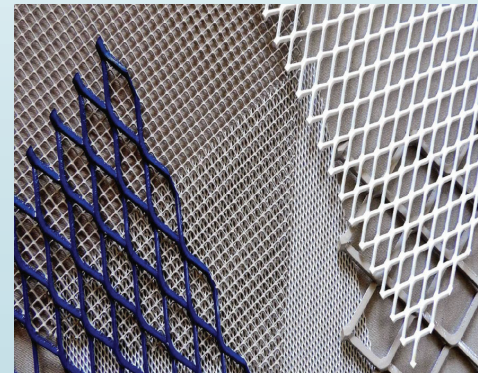
Flat Bar & Square Bar



Checkered Plate



C Pulins



Expanded Metal



# Group Financial Highlight



**TASHIN**



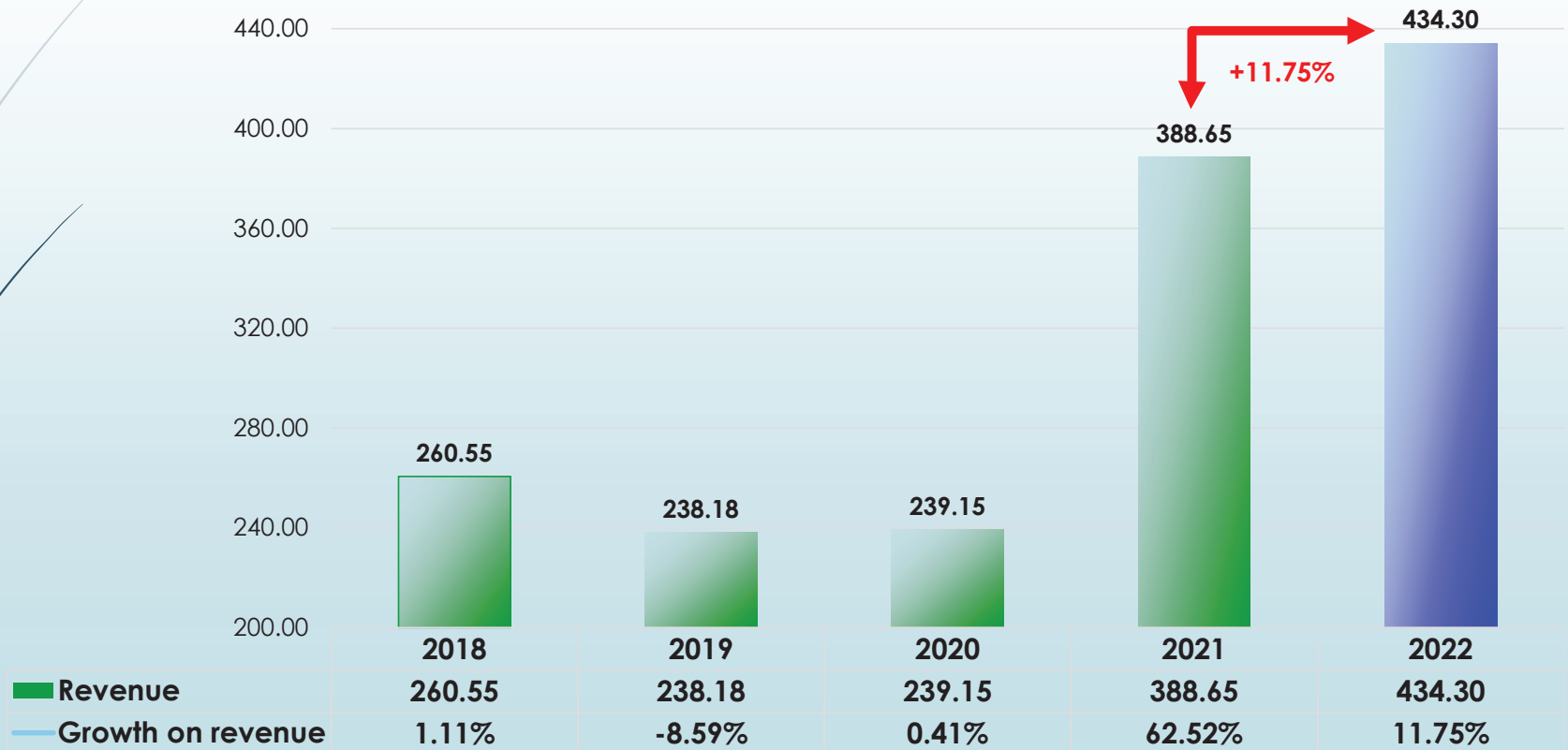
## Financial Highlights

# Group Revenue By Year



MYR (million)

Increased 11.75% (2022 Vs 2021)



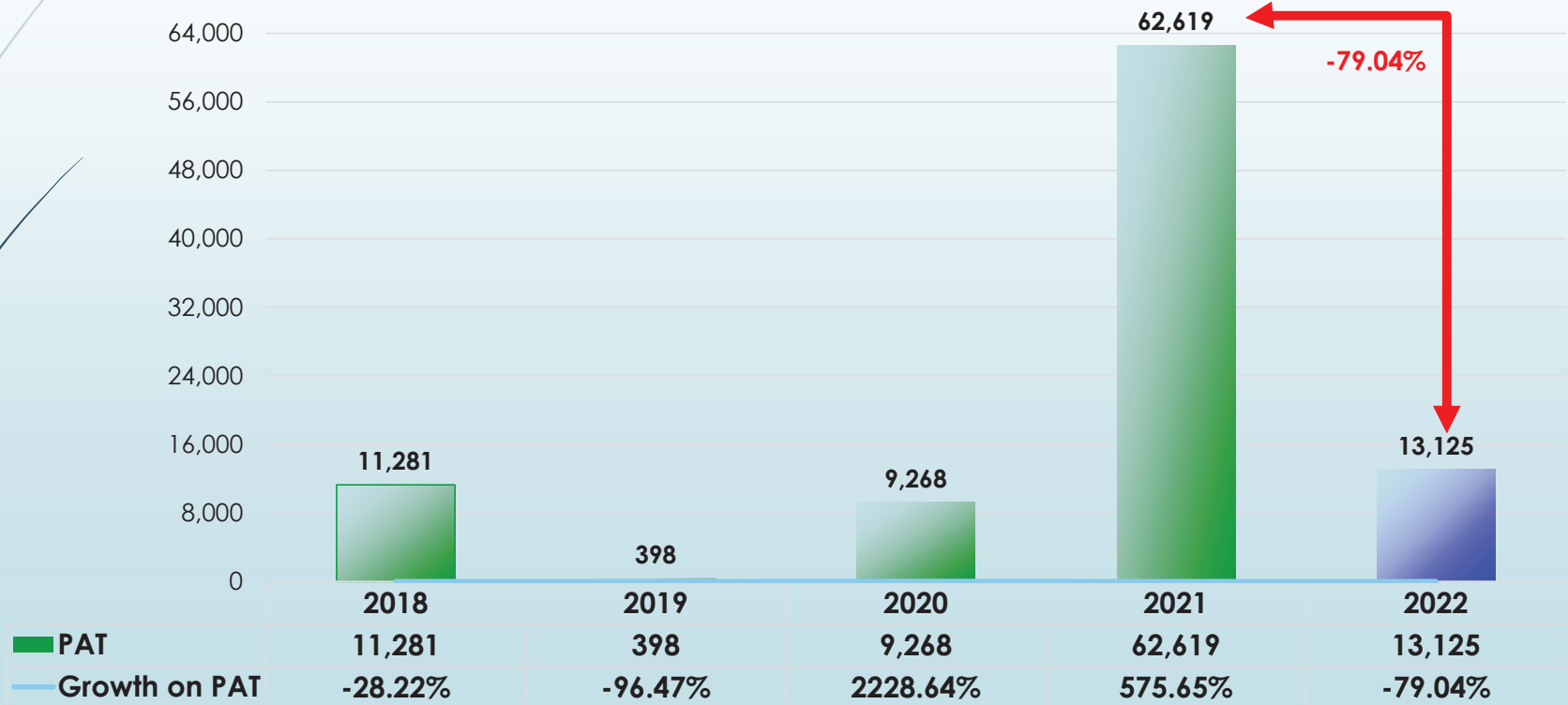


# Profit After Tax By Year



MYR (million)

Decreased -79.04% (2022 Vs 2021)



# Financial Data – Assets & Earnings

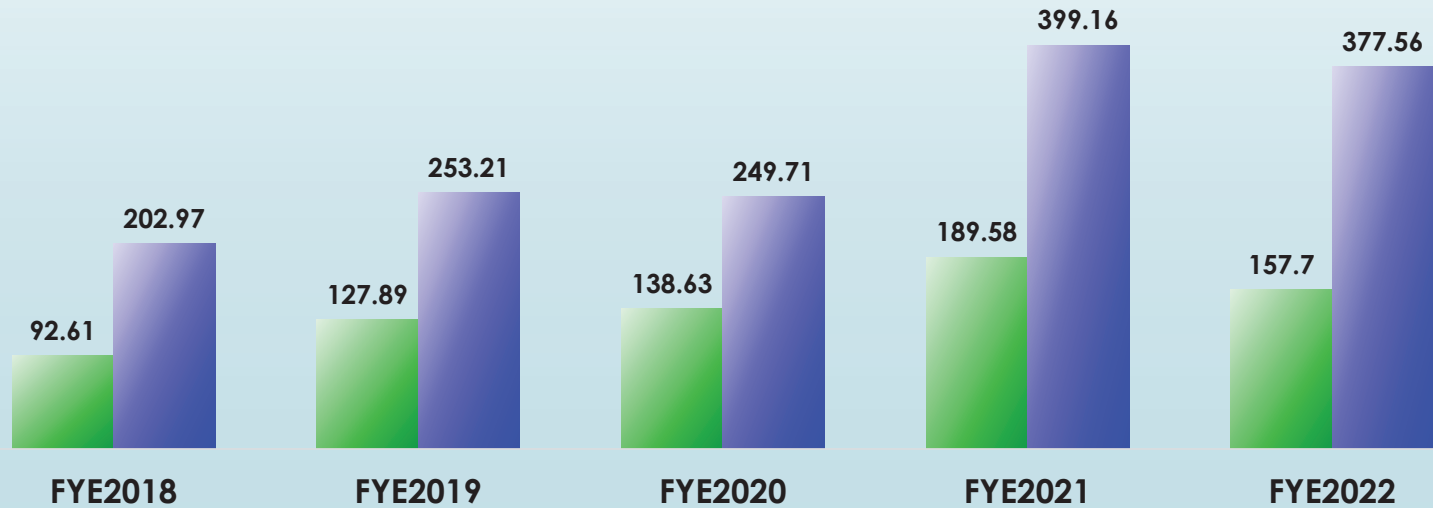


Earnings Per Share (sen)



MYR (million)

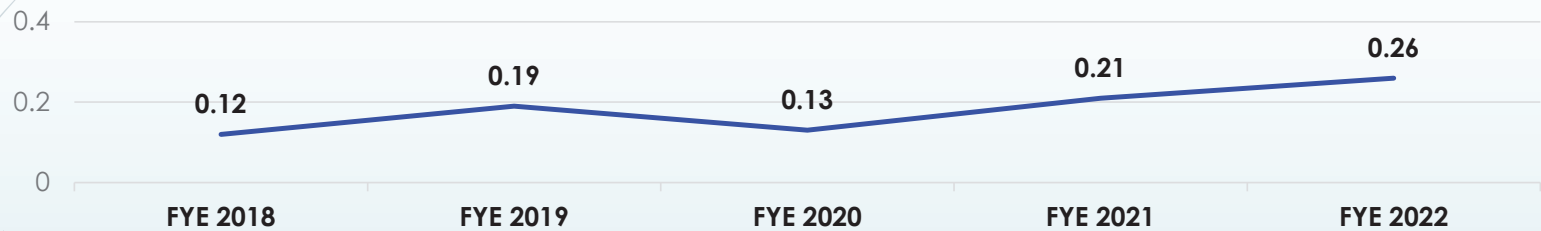
■ Net Current Assets ■ Total Assets



# Balance Sheet – Borrowings, Gearing & Cash

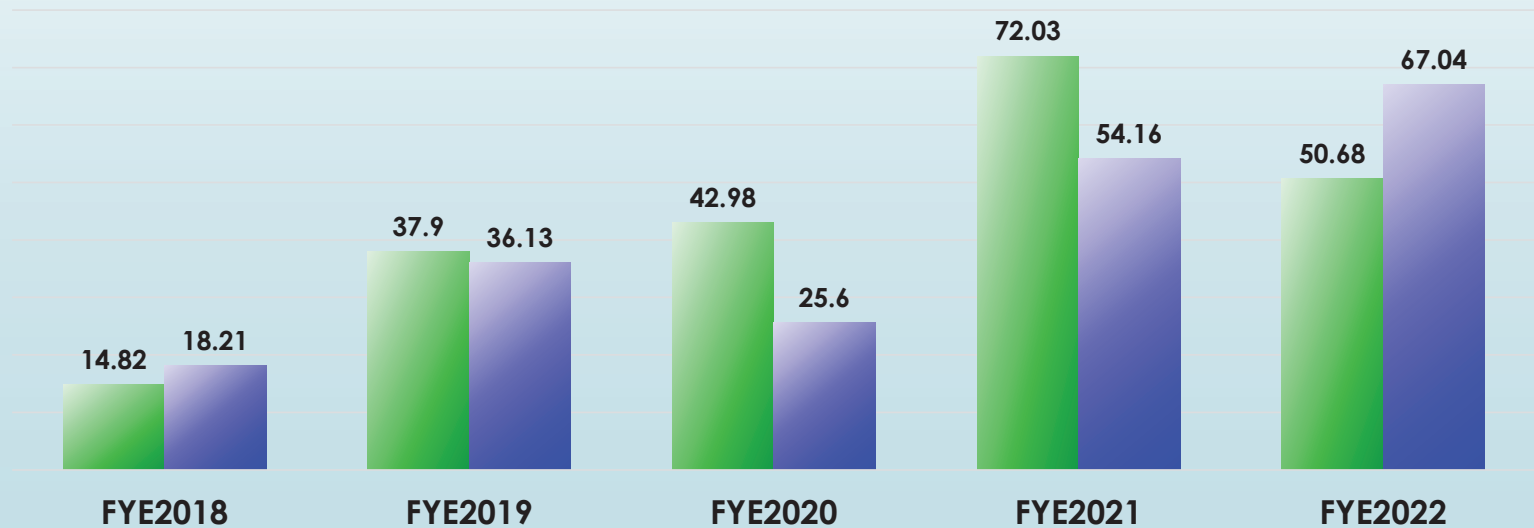


Gearing Ratio (times)



MYR (million)

■ Cash & Cash equivalents ■ Borrowings



## Key Financial Data & Ratios

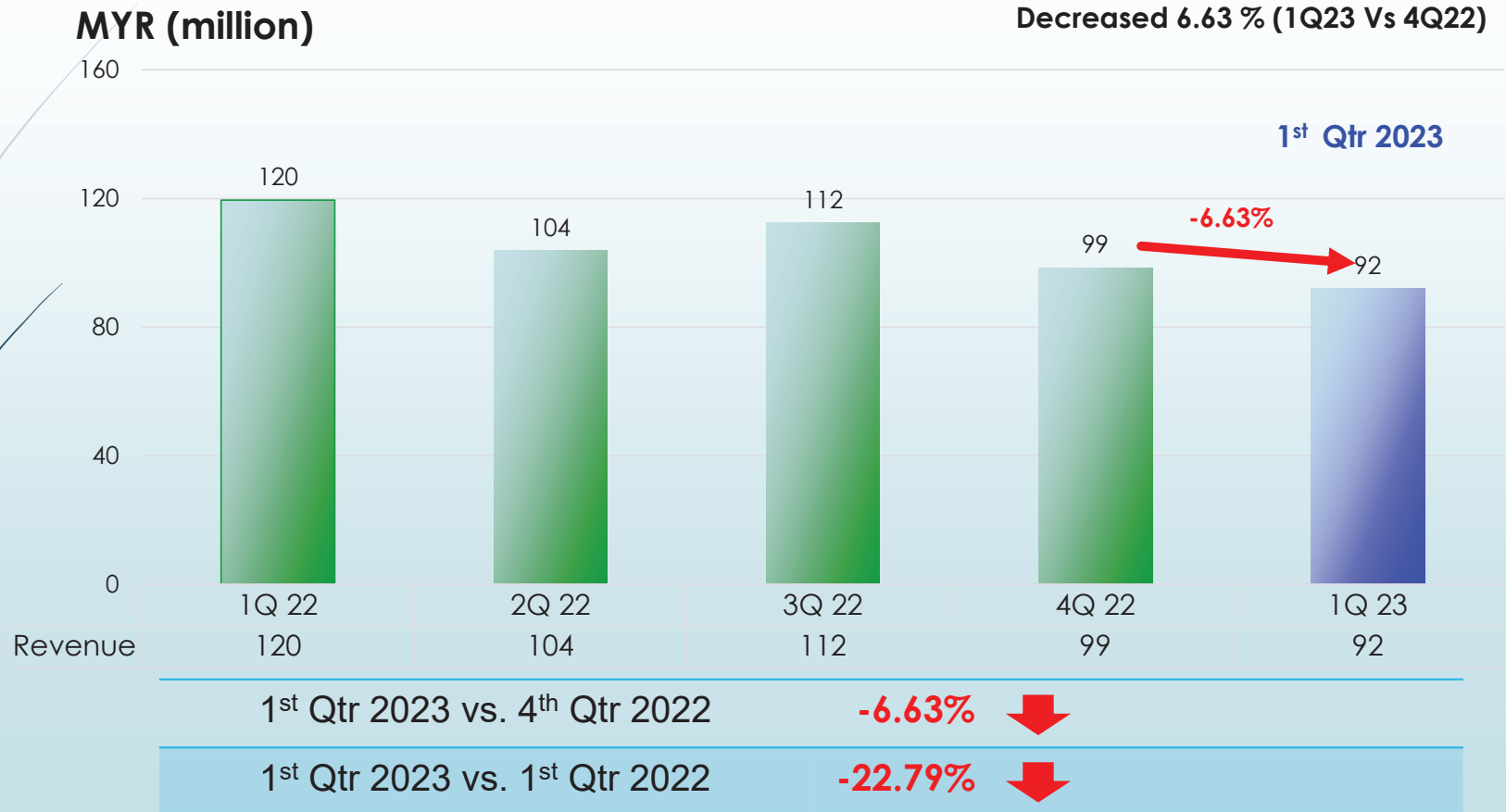
The logo for TASHIN, featuring the word "TASHIN" in a bold, green, sans-serif font. The letter "A" is stylized with three blue diagonal lines to its left.

	<u>As at 31/12/2022</u> <u>(MYR million)</u>	<u>As at 31/12/2021</u> <u>(MYR million)</u>	<u>Increased (%)</u> <u>/(Decreased) (%)</u>
<b>Total Assets</b>	377.56	399.16	<b>(5.41)</b>
<b>Net Current Assets</b>	157.70	189.58	<b>(16.82)</b>
<b>Shareholder's Funds</b>	258.86	256.21	1.37
<b>Borrowings</b>	67.04	54.16	23.78
<b>Gearing ratio (times)</b>	0.26	0.21	23.81
<b>EPS (sen)*</b>	3.76	17.94	<b>(-14.18 Sen)</b>

# Group Revenue By Quarter – Up to 1Q23



Decreased 6.63 % (1Q23 Vs 4Q22)



1<sup>st</sup> Qtr 2023

-6.63%

92

1<sup>st</sup> Qtr 2023 vs. 4<sup>th</sup> Qtr 2022

-6.63%



1<sup>st</sup> Qtr 2023 vs. 1<sup>st</sup> Qtr 2022

-22.79%

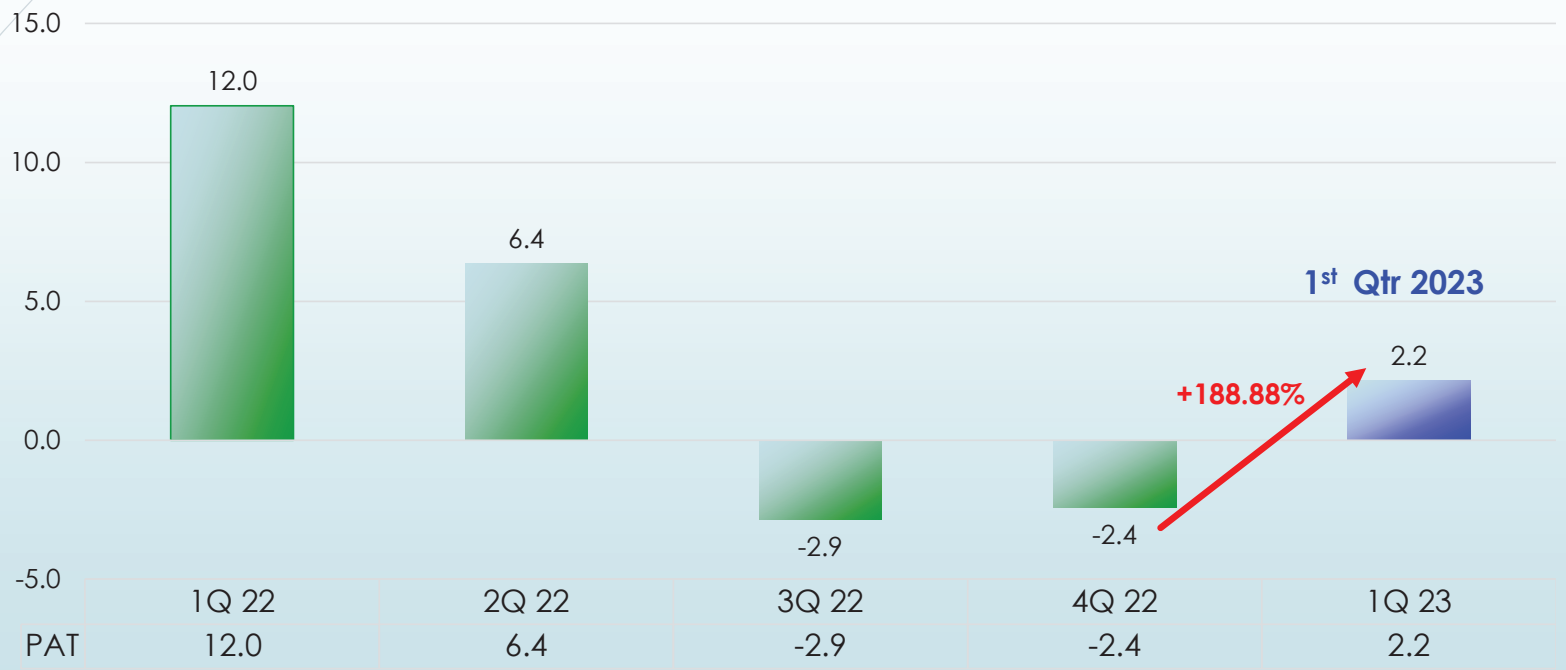


# Profit After Tax By Quarter – Up to 1Q23



Increased +188.88 % (1Q23 Vs 4Q22)

MYR (million)



1 <sup>st</sup> Qtr 2023 vs. 4 <sup>th</sup> Qtr 2022	<b>188.88%</b> ↑
1 <sup>st</sup> Qtr 2023 vs. 1 <sup>st</sup> Qtr 2022	<b>-82.15%</b> ↓

## Dividend for FY 2022



**Proposed Final Dividend of 2.0 sen per share for the Financial Year Ended 31 Dec 2022**

Year	No of Shares as at to-date	Final Dividend (sen)	Total Dividend (RM'000)	Date of Payment
2022	348,991,000	2.00	6,979	14/07/2023

**Declared Total Single-Tier Dividend for the Financial Year Ended 31 Dec 2021**

Year	No of Shares as at to-date	Interim & Final Dividend (sen)	Total Dividend (RM'000)	Date of Payment
2021	348,991,000	5.00	17,450	08/06/2022 & 16/12/2021

## UTILISATION OF IPO PROCEEDS as at 31 Dec 2022



Utilisation of proceeds	Revised Deadline	Proposed utilisation RM'000	Actual utilisation RM'000	Percentage utilised (%)
Acquisition of industrial Land and Buildings	31 July 2022	19,565	19,565	100%
Purchase of machinery and equipment for:				
- 1 air compressor	31 December 2022	108	108	100%
- 1 Slitting line	30 June 2022	1,800	1,800	100%
- 5 auto packing machines	30 June 2022	1,800	1,800	100%
General working capital	31 December 2022	7,938	7,938	100%
Estimated listing expenses	31 August 2019	3,200	3,200	100%
<b>Total</b>		<b>34,411</b>	<b>34,411</b>	<b>100%</b>

Note: THB has fully utilised the IPO proceeds.



## Corporate Social Responsibility

**TASHIN**

Blood donation campaign (December 2022)



Blood donation campaign at our Prai office, in collaboration with Jabatan Pathology Hospital Seberang Jaya.

## Corporate Social Responsibility

**TASHIN**



**Green Initiatives: Completed 955KW solar panels project to minimise energy consumption**



# TASHIN

End of presentation

Thank You!