



9th ANNUAL GENERAL MEETING
4th June 2026



PRESENTATION

Tashin Group Corporate Structure



Principle Activities

Company	Registration No.	Date/ Place of incorporation	Principal place of business	Effective equity interest %	Principal activities
Tashin Steel Sdn. Bhd.	199801014965 (471094-P)	30 October 1998/ Malaysia	Malaysia	100	Manufacturing and selling of steel products
Tashin Hardware Sdn. Bhd.	200401004046 (642549-V)	16 February 2004/ Malaysia	Malaysia	100	Manufacturing and trading of steel material and general hardware products



Tashin Steel Sdn Bhd

Plot 40, Lorong Perusahaan Maju 7, Kawasan
Perusahaan 4, 13600 Prai, Penang, Malaysia.



Tashin Hardware Sdn Bhd

No. 1617, Lorong Perusahaan Maju 6, Kawasan
Perusahaan 4, 13600 Prai, Penang, Malaysia.

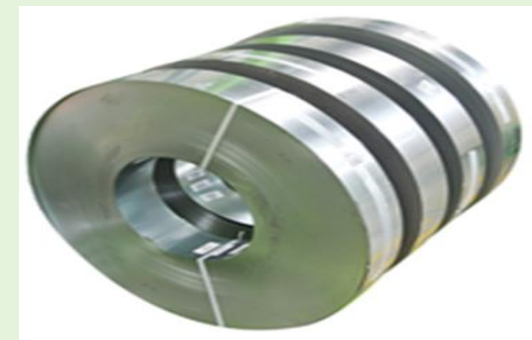




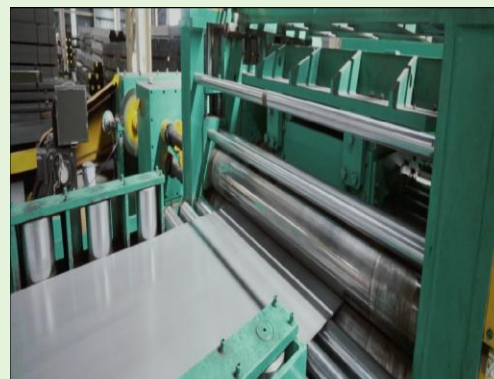
build up area
615,000
SQUARE FEET

OUR PRODUCT

Steel Processing



Slit Coils



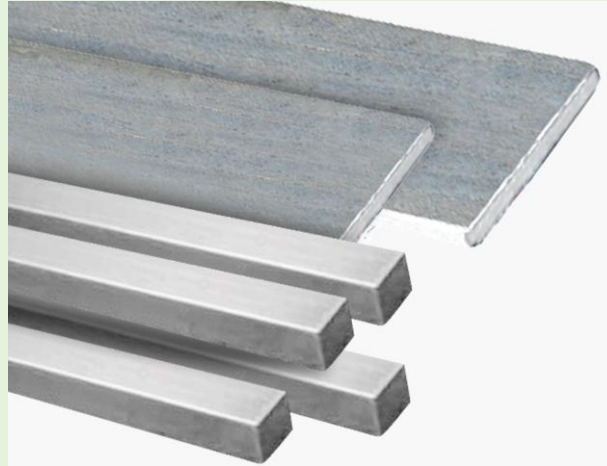
Steel sheets

OUR PRODUCT

TASHIN



Steel Pipes



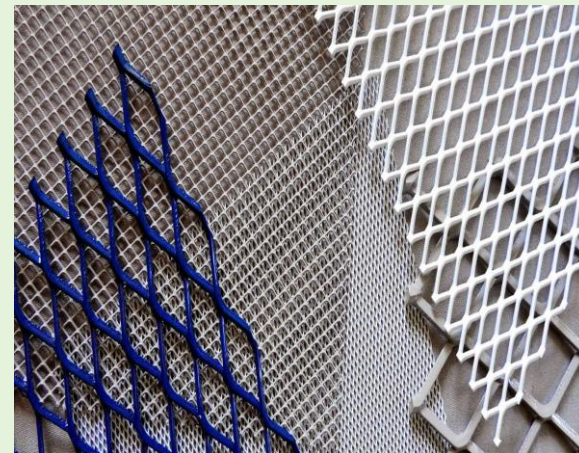
Flat Bar & Square Bar



Checkered Plate



C Pulins



Expanded Metal

Group Financial Highlight

TASHIN

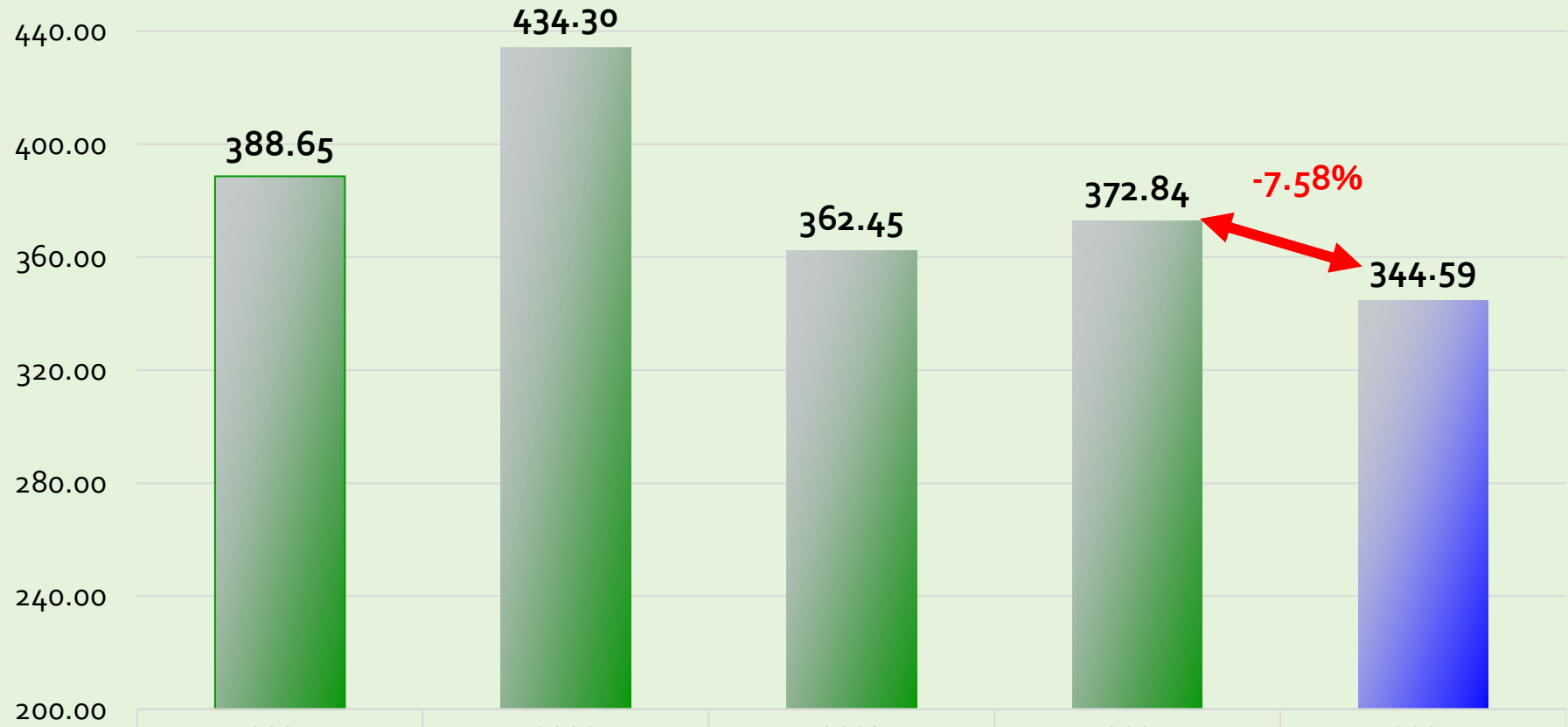


Group Revenue By Year



MYR (million)

Decreased 7.58% (2025 Vs 2024)

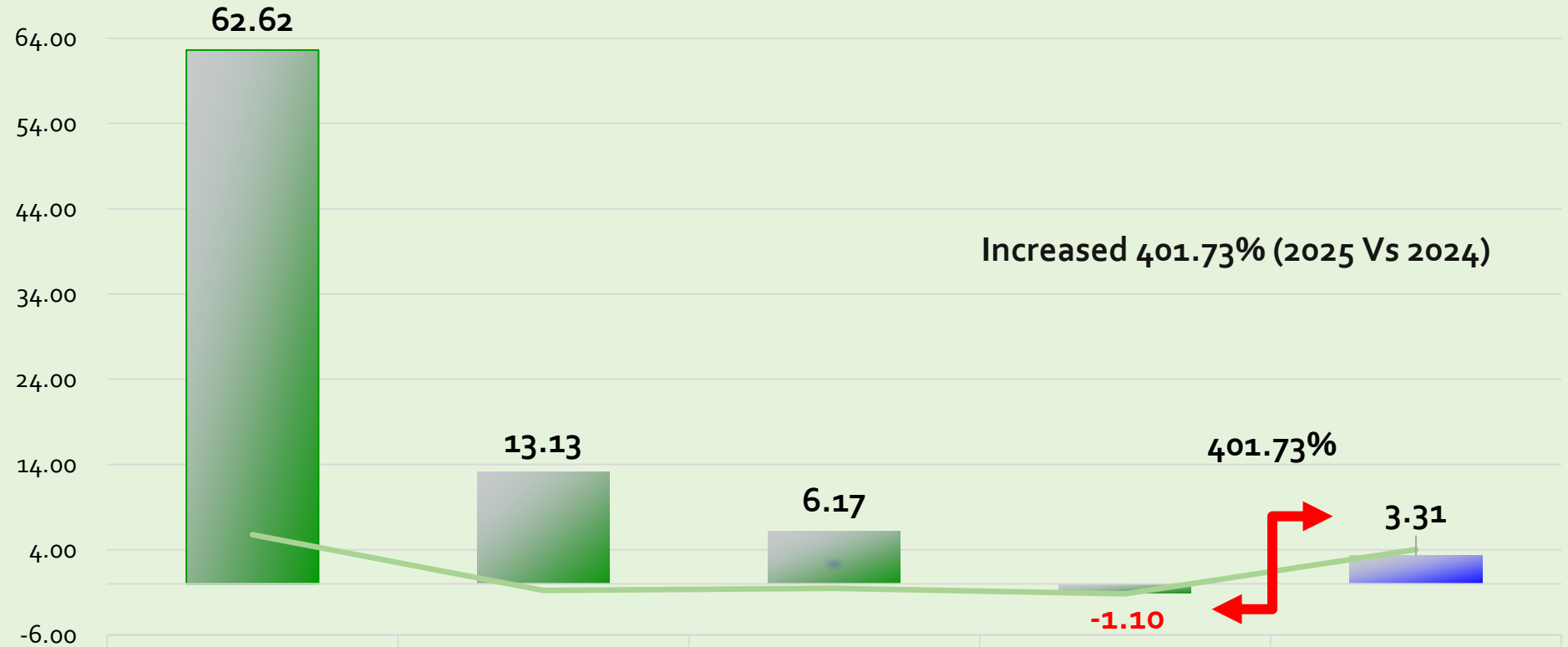


	2021	2022	2023	2024	2025
Revenue	388.65	434.30	362.45	372.84	344.59
Growth on revenue	62.52%	11.75%	-16.54%	2.87%	-7.58%

Profit/ (Loss) After Tax By Year



MYR (million)



	2021	2022	2023	2024	2025
PAT/ (LAT)	62.62	13.13	6.17	-1.10	3.31
Growth on PAT	575.65%	-79.04%	-53.02%	-117.79%	401.73%

Key Financial Data & Ratios



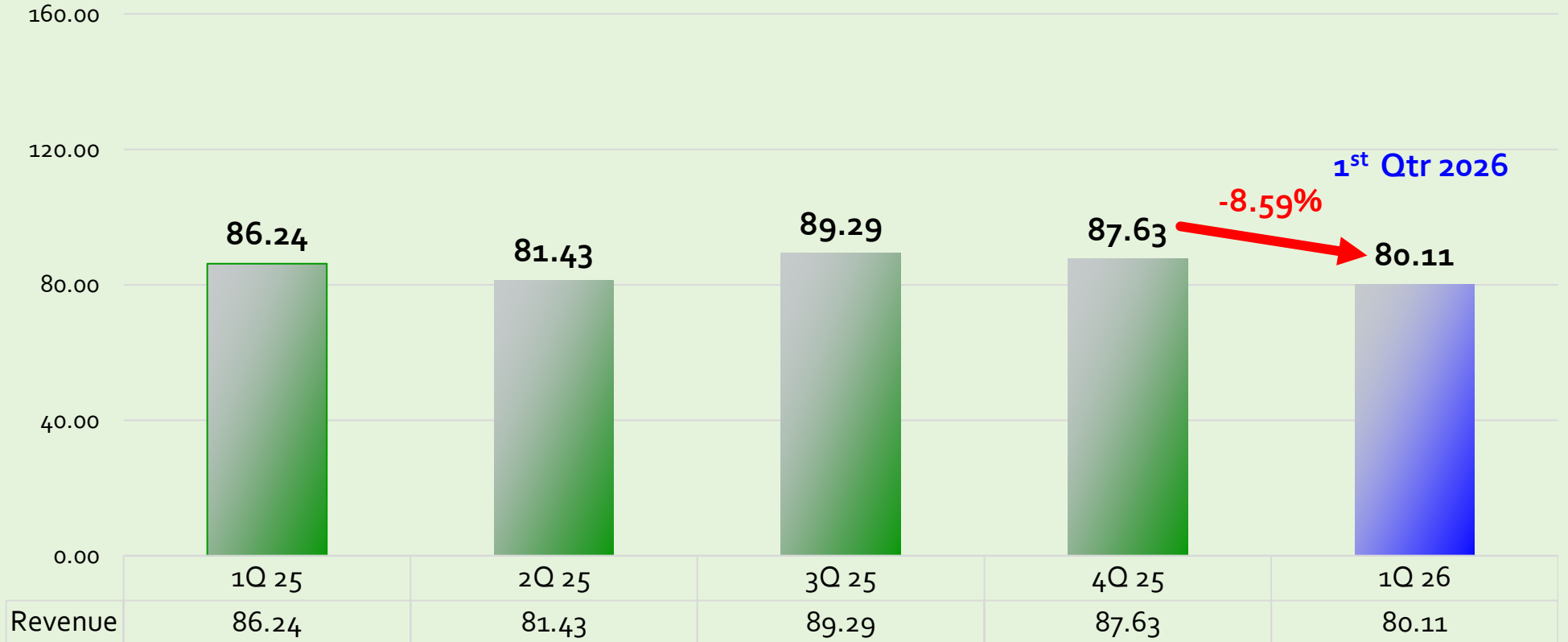
	<u>As at 31/12/2025</u> (MYR million)	<u>As at 31/12/2024</u> (MYR million)	<u>Increased (%)</u> <u>/((Decreased) (%))</u>
Total Assets	358.39	382.37	(6.27)
Net Current Assets	146.34	140.41	4.22
Shareholder's Funds	272.85	269.54	1.23
Borrowings	31.50	70.37	(55.24)
Gearing ratio (times)	0.12	0.26	(53.85)
EPS/ (LPS) (sen)*	0.95	(0.31)	1.26 Sen

Group Revenue By Quarter – Up to 1Q26



MYR (million)

Decreased 8.59 % (1Q26 Vs 4Q25)



1st Qtr 2026 vs. 4th Qtr 2025

-8.59%

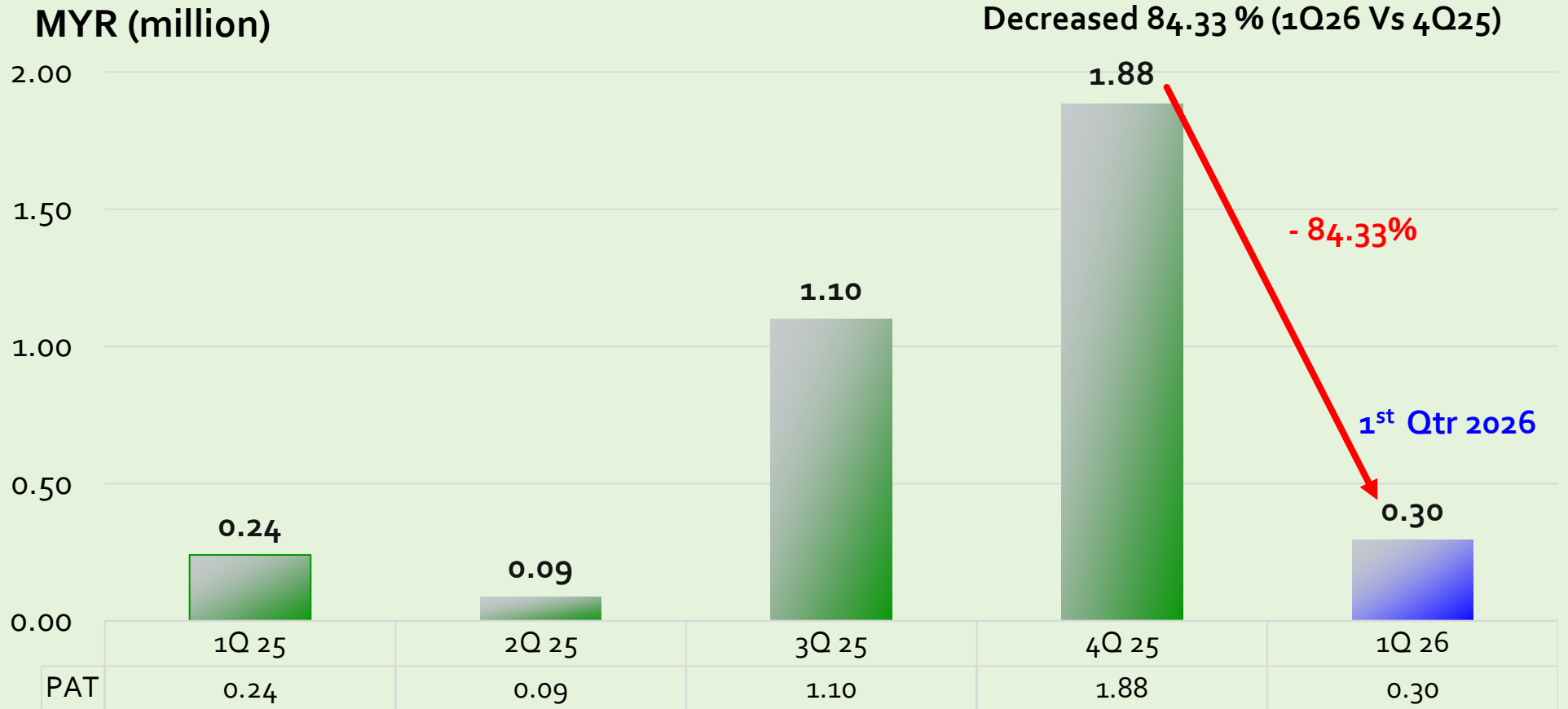


1st Qtr 2026 vs. 1st Qtr 2025

-7.12%



Profit After Tax By Quarter – Up to 1Q26



1st Qtr 2026 vs. 4th Qtr 2025

-84.33%



1st Qtr 2026 vs. 1st Qtr 2025

25.00%



Proposed Dividend for FY 2025



Year	No of Shares as at to-date	Single-Tier Final Dividend (sen)	Total Dividend (RM'000)	Date of Payment
2025	348,991,000	0.5	1,745	10/07/2026
2024	No Dividend Declared			

Corporate Social Responsibility 2025



Blood donation campaign



Blood donation campaign at our Prai office, in collaboration with Jabatan Pathology Hospital Seberang Jaya.

Charity Donation



Charitable donations supporting the children's home operations.



TASHIN

End of presentation

THANK YOU